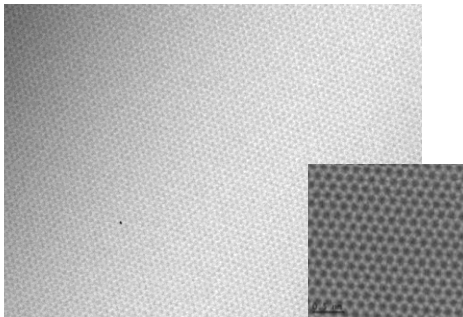


Graphene on PET

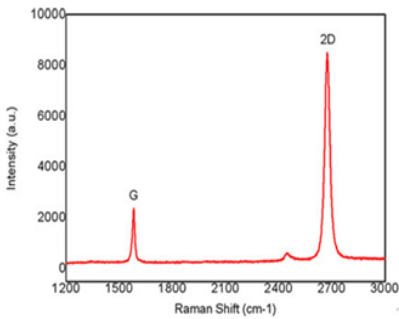


Product Size	Up to 500x600mm ²
Film Morphology	Continuous Monolayer (>95%)
Sheet Resistance	Av. < 250~400 Ω /sq
Mobility	>3500cm ² /Vs
Transmittance	>97%
Substrate	PET (188 μ m) (Standard)
Domain Size	10-20 μ m

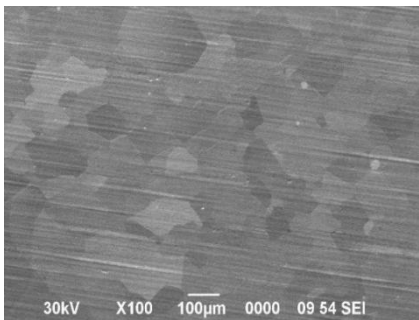
High-Resolution TEM Images



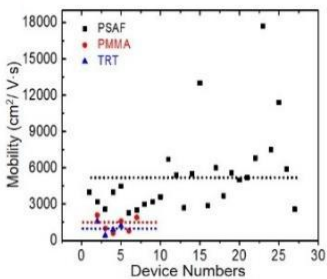
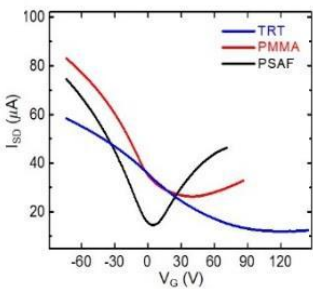
Raman Spectrum



SEM Image of Graphene on Cu

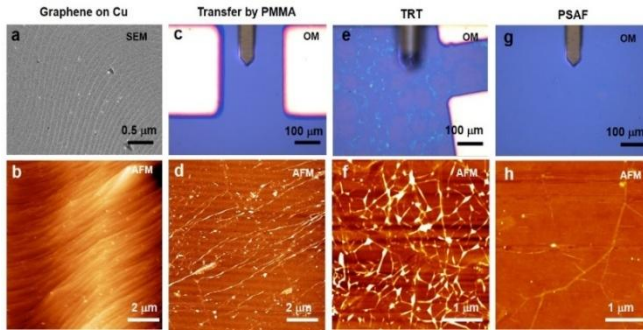


Electrical Properties

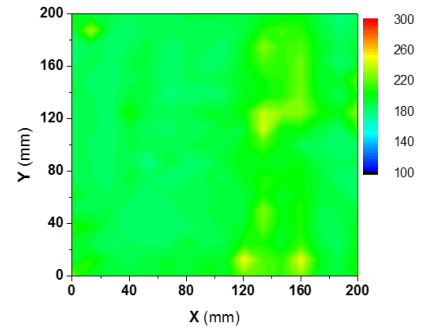




Ultra-Clean Transfer by Pressure Sensitive Adhesive Films



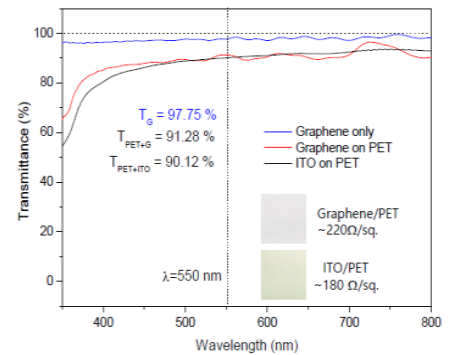
Sheet Resistance Uniformity



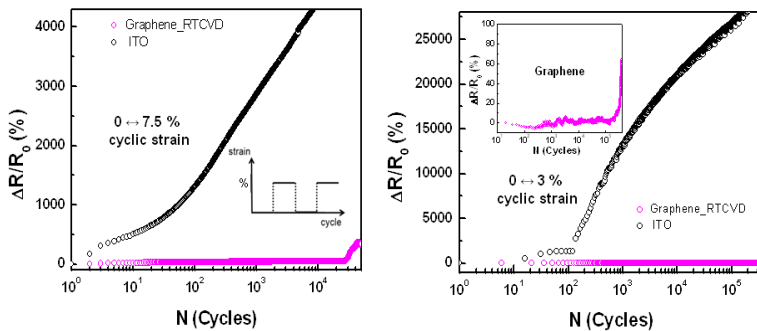
Application of Graphene on PET for Flexible Touch Screen



Optical Transmittance



Mechanical Properties of Graphene on PET



Reference

- (1) S. Kim *et al.* Ultra-Clean Patterned Transfer of Single-Layer Graphene by Recyclable Pressure Sensitive Adhesive Films. *Nano Lett.* (accepted).
- (2) S. Bae*, H. Kim* *et al.* Roll-to-roll production of 30 inch graphene films for transparent electrodes *Nature Nanotech.* **5**, 574 (2010).
- (3) J.-H. Ahn & B. H. Hong Graphene for displays that bend. *Nature Nanotech.* **9**, 737-738 (2014).