



# Transfer Kit

## CVD Graphene on Cu foil & TRT






50mm X 50mm foil 1ea, 200mm X 200mm TRT, 1ea

<b>Product Size</b>	Graphene 50x50mm <sup>2</sup> TRT 200x200mm <sup>2</sup>
<b>Film Morphology</b>	Continuous Monolayer (>95%)
<b>Sheet Resistance</b>	-
<b>Mobility</b>	>3500cm <sup>2</sup> /Vs
<b>Transmittance</b>	>97%
<b>Substrate</b>	Cu foil (35μm thick)
<b>Domain Size</b>	10-20 μm

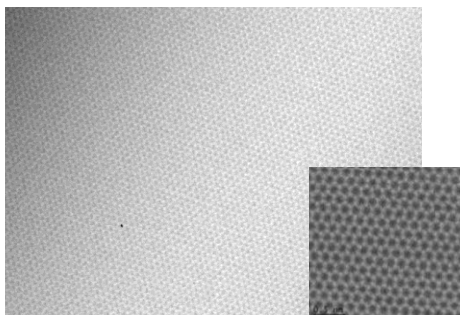
### Synthesize Set

1. CVD grown Graphene on Cu foil.  
(50mm X 50mm, 1ea)
2. Thermal Release Tape.  
(200mm X 200mm, 2ea)

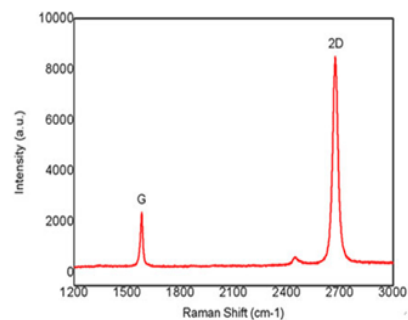
### Tape Structure

	Liner (Silicon coated PET film)
	Adhesive Layer
	PET Film

### High-Resolution TEM Images

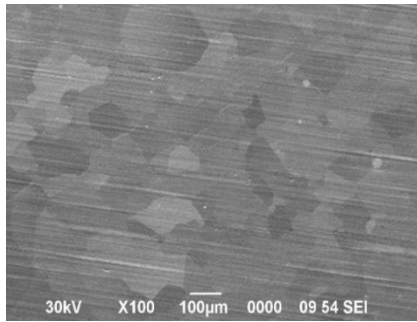


### Raman Spectrum (after transfer)





## SEM Image of Graphene on Cu



## Reference

- (1) S. Bae\*, H. Kim\* *et al.* **Roll-to-roll production of 30 inch graphene films for transparent electrodes** *Nature Nanotech.* **5**, 574 (2010).
- (2) K S. Kim *et al.* **Large-Scale Pattern Growth of Graphene Films for Stretchable Transparent Electrodes.** *Nature* **457**, 706 (2009).